



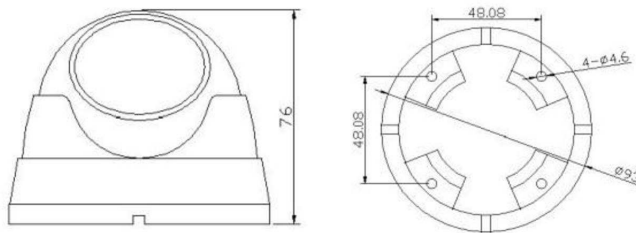
Color HD CMOS 800 TVL Model WCI 135AC



SPECIFICATION

- 1/3.8" Color Aptina HD CMOS
- 3.6mm Fixed Iris Lens
- Resolution 800TVL
- 23pcs 5mm IR LEDS
- IR View Distance 20m

DIMENTION



SPECIFICATION

Model	WCI135AC
Image Sensor	1/3.8" Color Aptina HD CMOS
Signal System	PAL/NTSC



Horizontal Resolution	800TVL
Total Pixel	PAL:976(H)*582(V) NTSC:976(H)*494(V)
Min. Illumination	0Lux IR On
Day & Night System	Auto Color to B/W Switch
S/N Ratio	≥ 48 dB
Video Output	1.0V _{p-p} , 750 Ω BNC
Gamma Correction	0.45
Exposure Mode	EE(Electronic Exposure)
Electronic Shutter	PAL=1/50~1/100,000sec, NTSC=1/60~1/100,000sec
Sync. System	Internal Synchronization
AGC	Auto
White Balance	Auto
BLC	Auto
Lens Type	4mm Fixed Lens
Lens Mount	M12
IR LED	23pcs 5mm IR LEDS, IR:20m Max
Power Voltage	DC12V $\pm 5\%$
Power Consumption	≤ 6 W
Case Material	Aluminum Alloy(Vandal Resistant)
Working Temperature	-30 $^{\circ}$ C~+50 $^{\circ}$ C
Working Humidity	10%~85%